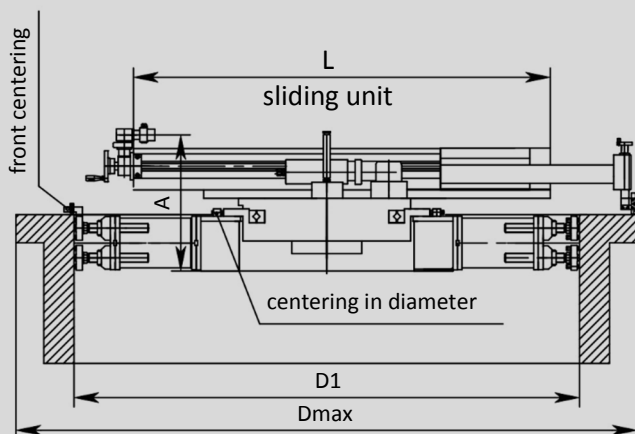


TECHNICAL SPECIFICATIONS

	FFMM-3000	FFMM-4000	FFMM-5000
Turning diameter (D, mm)	1200 - 3300	1700 - 4400	2000 - 5500
Feed (s, mm/r)	0 - 0,2	0 - 0,2	0 - 0,2
Speed (RPM, min ⁻¹)	5 - 15	5 - 15	5 - 15
Surface roughness (Ra)	1,6 - 5,5	1,6 - 5,5	1,6 - 5,5
Motor power (P, W)	3600	3600	3600
Torque (Mt, Nm)	2815	2815	2815
Motor drive	pneumatic	pneumatic	pneumatic
Air consumption (l/min)	3500	3500	3500
Tightening – internal (D1, mm)	1250 - 3000	1650 - 3800	1950 - 5000
Machine height (A, mm)	600	600	600
Sliding unit (L, mm)	1160	1720	2500

FFMM are modular portable machines for flange facing of large flanges. Mounted internally, they are used for different types of flange machining, making grooves for seals, preparation for welding or repair of the heat exchangers. They have a pneumatic drive and can machine flange diameter from 1200-5500 mm. All machines have a common turntable.

According to requirements, the needed size of machine can be obtained by modification of the module.



MACHINING CAPABILITIES

